

THE LAB / POD 1.0

# OFF/COURSE PROJECT

At The Lab we're always on the lookout for pioneering technologies that we can translate into challenging design concepts. A quest for constant development that breaks boundaries and leads us into new exciting areas. Discover the future today. Discover Pod 1.0.

GALVIN GREEN  
NEVER COMPROMISE



HARRY  
G1103



HOLLY  
G2104

## HARRY / HOLLY THE RAIN COAT



### NEW TECH

The fabric in this waterproof parka is made from recycled polyester. The fiber is designed to be circular and can be recycled back to the resource from which it was once extracted after its useful life cycle. The rain coat features mesh lining for added warmth, breathability and moisture management.

### NEW DESIGN

Everyday rain coat with a hood. Hidden front zip with hidden magnet closure. Packed with features such as front pockets, two inner pockets, reflective prints on back and a drawstring hood with extended brim.

### FACTS

- Waterproof
- Windproof
- Extremely breathable
- 100% polyester with PET membrane
- Lightweight mesh lining in 100% polyester
- Designed for circularity
- BLUESIGN® approved fabric

HUGO / HECTOR  
THE PADDED JACKET / VEST



**NEW TECH**

The fabric is made with a unique 3D Weave technology, which allows chambers to be woven directly into the fabric, eliminating the need for stitching. This maximizes the performance of the insulation, reduces overall weight and improves down retention.

**NEW DESIGN**

A smooth jacket and vest with down padding and stretch function for a flexible feel. Hidden front zip closure with snap placket. Contemporary sportswear look with a versatile area of use. Perfect for the city life and for leisure activities.

**FACTS**

- Windproof
- Water repellent finish
- Stretch fabric
- 100% polyester
- Filling: 90% down  
10% feather
- BLUESIGN® approved fabric

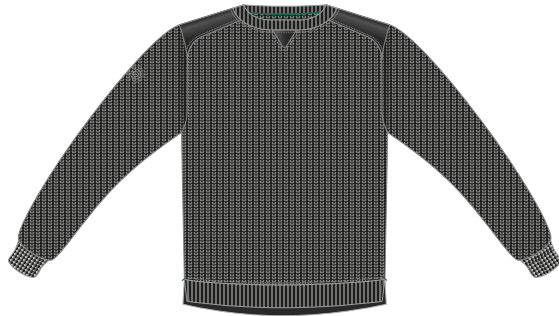


HUGO  
A5020



HECTOR  
A5021

## HARRISON THE SWEATER



### NEW TECH

The polyester fabric simulates a classic knitted garment surface and the backing is brushed as fleece to provide exceptional warmth properties. Shoulders reinforced for extra abrasion resistance.

### NEW DESIGN

This crew neck sweater features shoulder patch details. Neat green logo bar tags and gross grain tape at back.

### FACTS

- Soft comfort
- Breathable
- Ribbed cuffs and hemline
- 100% polyester
- BLUESIGN® approved fabric



HARRISON  
A5040

TEX / TYRELL  
THE BACKPACK / WEEKEND BAG



TEX  
G1295



TYRELL  
G1296

**NEW TECH**

Made of premium synthetic/vegan leather known for its durability and weather resistance. They are easy-to-clean and have waterproof zippers. The backpack has air-mesh back panel for comfort and breathability and the bag a breathable, bottom compartment.

**NEW DESIGN**

The backpack has a refined exterior, along with a well-designed interior that gives you the sleek storage you need for daily essentials. The weekend bag is perfectly sized to fit in a club locker or overhead bin. With thoughtful organization inside and out, this bag is the ultimate getaway essential.

**FACTS**

- Backpack:
- Padded laptop sleeve: fits up to a 15" MacBook Pro.
- Weekend bag:
- Detachable, padded shoulder strap.
  - Front zip pocket for quick access to item like your passport.

TATE  
THE SLINGBAG



TATE  
G1298



TATE  
G1298

**NEW TECH**

Made of a durable and wind- and water repellant fabric, 100% polyester. Air-mesh back panel for comfort and breathability.

**NEW DESIGN**

Practical, smart and functional small bag that is easy to swing over your shoulder. An ingenious and convenient solution when you just need to have the most important things with you on the go.

**FACTS**

- Wind- and water repellant fabric.
- Large main compartment that opens wide.
- Innerpocket with zipper.

GALVIN GREEN AB  
Sandvägen 7  
SE-352 45 Växjö, Sweden  
+46 (0)470 70 51 00  
[www.galvingreen.com](http://www.galvingreen.com)

GALVIN GREEN  
NEVER COMPROMISE